

**104TH
KENDALL COUNTY
FAIR
BOERNE, TEXAS**

***LIVESTOCK SUPPLEMENT ***

WWW.KCFA.ORG

**AUGUST 29, 2009
CATTLE SHOW ONLY**

**SEPTEMBER 5 & 6, 2009
SHEEP, GOATS & PIGS**



Labor Day Weekend

**1ST ANNUAL CATTLE SHOW
AUGUST 29, 2009
TCCA SANCTIONED**

**12TH ANNUAL MEAT GOAT SHOW
& SHOWMANSHIP SHOW
SEPTEMBER 5, 2008
TCMGA SANCTIONED**

**29TH ANNUAL LAMB SHOW
& SHOWMANSHIP SHOW
SEPTEMBER 5, 2008
TCLA SANCTIONED**

**30TH ANNUAL PIG SHOW
SEPTEMBER 6, 2008
TCPA SANCTIONED**

General Information

Welcome:

The Kendall County Fair Association and the Livestock Committee encourages your participation in this year's Labor Day Livestock Show. It is our pleasure to welcome you to the beautiful city of Boerne and the Kendall County Fair Grounds.

Fair Dates:

This year the Labor Day Livestock Show will have a slight change in the format to allow for the much requested addition of a Sanctioned Steer Show. The Steer Show shall take place Saturday, August 29, 2009. Then in conjunction with the Kendall County Fair on Saturday & Sunday, September 5 & 6, 2009, the Lamb, Goat and Swine Shows shall be held. The Board of Directors of the Kendall County Fair Association and the Livestock Committee reserves the right postpone, shorten, or extend the events as deemed necessary for the good of this event and all concerned.

Interpretation of the rules:

The Board of Directors of the Kendall County Fair Association shall defer the final interpretation of all rules and regulations of the Labor Day Livestock Show to the Livestock Committee. This committee shall arbitrarily settle and determine all matters, questions, and concerns that may arise from this event, and may adjust the rules as its judgment determines. Any exhibitor who violates the following rules may be required to forfeit all privileges, fees paid, and premiums or prizes. The Livestock Committee may also require the immediate removal of the exhibit from the premises. Special rules and regulations are published in each department where necessary. If there are any conflicts between the special rules and requirements and the general rules, a determination of the rules will be provided by the Livestock Committee on a case by case basis.

Liability Statement:

All exhibitors and exhibits shall comply with the rules and regulation of the Labor Day Livestock Show. The Kendall County Fair Board of Directors, the Livestock Committee, its agents and volunteers shall not be liable for loss, damage, or injury, but shall take all feasible precautions to prevent any such loss, damage, or injury to you and your property, or livestock, and visitors to the Livestock Show and Fair. Each exhibitor will be responsible for taking care of their exhibits and any damage or injury such exhibit causes.

Fire Regulations:

No smoking in any building, open air or enclosed. No containers containing flammable liquids will be allowed in any buildings. No cooking, grilling or open fires on the Kendall County Fair Grounds. Concessions shall be available.

Alcohol Regulation:

No ice chest may be brought on the grounds to due licensing requirements from TABC. Concessions shall be available.

Special Needs:

Any special needs or requirements not mentioned in this publication should be brought to the attention of the Livestock Committee or Show Manager for determination and assistance.

Exhibitor FAQ's

What are the deadlines for entries?

August 10, 2009 is the entry deadline for cattle exhibits. August 17, 2009 is entry deadline for lamb, goat, and pig exhibits.

Can I enter livestock after the entry deadline?

Yes, but late fees will be added. See individual sections for fees.

How do I submit my entries?

Please print entry form found on this website, have them signed by parent or legal guardian, and mail along with payment to: Denise Vadnais, P.O. Box 2154, Boerne, Texas, 78006.

When do I get stall assignments?

No stalls are preassigned. They are available on a first come first serve basis.

Do I bring my own shavings?

Yes, but please note that there is no hay allowed in the cattle barn, animals must be on cedar shavings.

Do I need health papers on my animals?

No, we do not require health papers, but any animal infected with disease or parasite should not be brought to the show. Veterinarian on site will require any such contagious or infected animal to be treated and / or removed from the grounds immediately at the owner's expense for the protection of others.

Can I bring my animals in earlier than the specified arrival time?

In some cases we do allow for early arrival. Please contact Denise @ 830-446-1950 for details.

Can I get an early release after the show?

Early releases can cause traffic problems in our small area. Please respect other exhibitors arriving or departing with their animals. For any special needs please see staff in show office.

What passes will each exhibitor get? When will I get these passes?

Passes are issued for Labor Day Weekend only. For those entering only the cattle show on August 29, 2009 will not require passes.

Process for pass disbursement will be determined at later date.

Didn't get your questions answered?

Email Denise at mdvadnais@gmail.com or call 830-446-1950.

KCFA Labor Day Livestock Show

**Livestock Committee: Denise Vadnais-Director / Show Manager,
Chris Hernandez-Director, Stephen Zoeller, Jackie Osborn,
Bruce Lott, Will & Debbie Thomason, Cheyenne Osborn**

**Special Assistance provided by: Dennis Vadnais, Art Vadnais,
Jennifer & Marie Spenrath, Tianna Foulke, Becky Thomas**

Rules & Regulation

1. Each exhibitor shall be subject to all the rules and regulations of the Labor Day Livestock Show, The Kendall County Fair Association, and the organization sanctioning the event. Conflicts between these rules will be decided by the Livestock Committee and the show manager.
2. Great effort is taken to provide good quality judges. Judges are requested to make themselves familiar with all breeds that will be judging. All Judges' decisions will be final.
3. No judge or any member of his or her immediate family may exhibit anything in any class that he or she will be judging.
4. Protests or complaints may be filed with the Show Office. If the protest or complaint can not be satisfied, then you may make a protest to the TJLA. A non-refundable cash or certified check deposit is required. TJLA office can be contacted for further information.
5. Exhibitors and Showman must be Texas 4-H or FFA members, currently enrolled in Public or Private school below the college level. Pee-wee divisions do not require school enrollment.
6. Entries must be postmarked as follows:
August 10, 2009 for Cattle Show.
August 17, 2009 for Lamb, Goat, & Pig Shows

Entries will be only accepted with payment.

7. **No refunds after August 17, 2009.** Refunds must be requested in writing prior to deadline. Monies eligible for refund that are not requested by the deadline will be considered forfeited to the Kendall County Fair Association.
8. **Return Check Policy:** Checks for payment of entry fees that do not clear the KCFA account for any reason within 5 business days will incur a \$35.00 return check fee. Exhibitors will not be allowed to participate in any events until payment in full received. If the event is completed when the check is returned, the sanctioning organization may be notified, points withheld and exhibitor may be prevented from participating in other sanctioned events.
9. Each individual exhibitor must have an entry form signed by a parent or legal guardian. Included on that entry form is a photography release, which allows the Kendall County Fair Association to use the exhibitor's photographs in marketing plans, websites, news releases and other printed materials that assist the organization in its mission of encouraging youth development through agricultural events.
10. No stalls or pens will be assigned. Stalling will be on a first arrival basis.

11. A veterinarian shall be present at the time weigh cards are turned in to verify there is no infection or contagious disease that might put other livestock, exhibitors, or visitors at risk. Any decision of the veterinarian to removed an animal from the grounds due to infection or disease shall be final. Exhibitors are responsible for all veterinarian fees incurred for medical care while on the premises.
12. **ALL LIVESTOCK EXHIBITED MUST MEET THE CURRENT TEXAS ANIMAL HEALTH COMMISSION REGULATIONS.**
13. All animals must be free of infectious or contagious disease and parasites, such as ringworm, ticks, lice or mites. If an animal is found to carry an infectious disease or parasite that can be transmitted to other animals or exhibitors, the owner will be required to treat the animal to prevent spread of the disease or parasite or remove the animal from the grounds. No refunds will be given for animals required to be removed by show officials or veterinarian.
14. No COOKING OR GRILLING on the Grounds due to possible burn bans or other restrictions by law. Concessions will be available.
15. Due to TABC regulations outside alcoholic beverages may NOT be brought onto the grounds. Concessions will be available.
16. Any exhibitor that may receive more than \$600.00 per year in prize monies will be required to complete IRS form w-9 with social security number and provide that to KCFA.
17. No RV's or Air Conditioned Trailers will be allowed to plug into facilities.
18. No canopy tents will be allowed in or around the facilities unless provided by or approved by the KCFA. Generator encouraged.
19. Each exhibitor is responsible for cleaning the stalls or pens occupied by their animals and the alleys adjoining such stalls or pens. Litter should be placed in designated areas such as trash cans or dumpsters.
20. All animals must be sufficiently halter broke that they can be handled safely by both exhibitors and spectators. Animals should be in show condition. Animals that do not meet these requirements may at the discretion of the Livestock Committee be barred from the show barn. These animals must be removed from the grounds immediately,
21. Only certain breeds of livestock are listed by name in the Premium List, but if other registered breeds are presented for exhibition, they may be accepted, and if accepted will be subject to all rules of the show and will be eligible for the same prize monies offered for similar breeds.
22. All exhibitors and parents are asked to cooperate with security personnel, Livestock Committee members, and Directors of KCFA in all matters of policy, including parking and admissions. Those exhibitors not cooperating may have their entries cancelled and then must remove their exhibits from the grounds immediately. They will also forfeit any fees paid.
23. Code of Conduct: All exhibitors, parents and staff are expected to behave in a manner that provides a positive environment for youth to learn, grow, and have fun while showing off all the hard work that goes into each project. Respect on another. Treat each other with kindness. Show good sportsmanship at all times.
24. All exhibitors must wear school appropriate clothing while showing. No shorts or tank tops,
25. Exhibitors are encouraged to hang signs over their exhibits to advertise their herds.

26. All empty trailers must park in **DESIGNATED AREAS ONLY**. Please note the arrival, departure and parking instructions found on the included map. Parking in some areas is restricted and vehicles left in those areas are subjected to towing and impounding at the owners expense.

27. Entry Fees must be postmarked by August 10, 2009 as follows:

Steers "A" Show.....	\$30.00 a head
Steers "B" Show.....	\$10.00 a head
Breeding Cattle	\$10.00 a head

Entry Fees must be postmarked by August 10, 2009 as follows:

Breeding Sheep	\$5.00 a head
Angora Goats	\$5.00 a head
Breeding Swine	\$8.00 a head
Futurity Lambs "A" Show.....	\$25.00 a head
Futurity Lambs "B" Show.....	\$10.00 a head
Futurity Pigs "A" Show	\$25.00 a head
Futurity Pigs "B" Show.....	\$10.00 a head
Meat Goats "A" Show	\$25.00 a head
Meat Goats "B" Show.....	\$10.00 a head

28. Make all checks payable to **Kendall County Fair**. For more information call 830-446-1950.

Send entries to: **Denise Vadnais**
P.O. Box 2154
Boerne, TX, 78006



Schedule of Events

Gates open at 10:00 a.m.

Deadline for Cattle Arrival.....5:00 p.m. Friday, August 28, 2009
 Weigh In & Classification.....5:00 p.m. Friday, August 28, 2009
 Opening Ceremonies.....9:00 a.m. Saturday, August 29, 2009
 Show Time9:00 a.m. Saturday, August 29, 2009
 Presentation of Director's Choice Awards.....Before Final Judging of Event
 Release Time..... Upon completion of last event

Gates open at 10:00 a.m.

Deadline for arrival of Lamb & Goats.....5:00 p.m. Friday, September 4, 2009
 Weigh In & Inspection of Lambs5:00 p.m. Friday, September 4, 2009
 Weigh In & Inspection of GoatsTo follow the completion of Lambs

Opening Ceremonies.....8:00 a.m. Saturday, September 5, 2009
 Breeding Sheep Show.....8:00 a.m. Saturday, September 5, 2009
 Angora Goats Show.....To follow the completion of Breeding Sheep

Lamb Showmanship.....9:00a.m. Saturday, September 5, 2009
 Goat Showmanship.....9:00 a.m. Saturday, September 5, 2009
 Lamb "A" Show.....10:00 a.m. Saturday, September 5, 2009
 Presentation of Director's Choice Awards..... Before Final Judging of Event
 Goat "A" Show.....10:00 a.m. Saturday, September 5, 2009
 Presentation of Director's Choice Awards..... Before Final Judging of Event
 Lamb "B" Show.....1:00 p.m. Saturday, September 5, 2009
 Goat "B" Show.....1:00 p.m. Saturday, September 5, 2009
 Release Time for Lamb / Goat.....Upon Completion of last Event

Arrival of Swine starts.....5:00 p.m. Saturday, September 5, 2009
Important: No arrival allowed between 6 – 8 p.m. due to Rodeo events

Weigh In & Classification of Swine.....8:00 a.m. Sunday, September 6, 2009
 Opening Ceremonies.....9:00 a.m. Sunday, September 6, 2009
 Breeding Swine Show.....9:00 a.m. Sunday, September 6, 2009
 Swine Showmanship.....10:00 a.m. Sunday, September 6, 2009
 Swine "A" Show.....12:00 noon Sunday, September 6, 2009
 Presentation of Director's Choice Awards..... Before Final Judging of "A" Show
 Swine "B" Show.....To Follow Director's Choice Award
 Release Time for Swine.....Upon Completion of last Event

Judges

Lamb Judge "A" ShowTBA
Lamb Showmanship/ Lamb Classifier..... TBA
Lamb Judge "B" Show TBA
Breeding Sheep Show..... TBA
Angora Goat Show..... TBA
Goat Judge "A" Show..... TBA
Goat Showmanship..... TBA
Goat Judge "B" Show..... TBA
Cattle Judge "A" Show..... TBA
Cattle Showmanship / Cattle Classifier..... TBA
Cattle Judge "B" Show TBA
Breeding Pigs..... TBA
Swine Judge "A" Show..... TBA
Swine Showmanship..... TBA
Swine Judge "B" Show..... TBA



2009 Kendall County Fair Association Annual Labor Day Livestock Show Entry Form

Exhibitor Name: _____ Age/ Grade: _____

Address: _____, City _____, Zip _____

Phone: _____ Alt. Number: _____ Email: _____

Are there any special needs or challenges that KCFA needs to accommodate?

No Yes, explain _____

Division	Entry Fee	Number of animals	Total
Breeding Cattle	\$10.00		
Steer "A" Show	\$30.00		
Steer "B" Show	\$10.00		
Breeding Sheep	\$5.00		
Angora Goats	\$5.00		
Breeding Pigs	\$8.00		
Pig "A" Show	\$25.00		
Pig "B" Show	\$10.00		
Lamb "A" Show	\$25.00		
Lamb "B" Show	\$10.00		
Goat "A" Show	\$25.00		
Goat "B" Show	\$10.00		
		Total due =	

I, as the parent/guardian of the above listed youth participant, **do hereby grant permission by my signature affixed below**, to the Kendall County Fair Association Inc. to take and reproduce photographs and videotapes for publication by news sources and other media sources for all educational, trade, advertising, and other mission related purposes as determined by the Kendall County Fair Association Inc.

Parent / Guardian Signature: _____ Date _____

If you do not wish your child's photograph or image to be published in any newspaper, advertising material, or other publication as to the mission of the organization, please sign below.

Signature _____ Date _____

Cattle entries must be postmarked by August 10, 2009.
All other entries must be postmarked by August 17, 2009.

Make all checks payable to **Kendall County Fair**. Entry fees must accompany entries and be mailed to:

**Denise Vadnais
P.O. Box 2154
Boerne, Texas 78006**

2009 Kendall County Fair Association Annual Labor Day Livestock Show

Division A

Breeding Cattle

Entry Fee: \$10.00 a head. Entries postmarked by August 10, 2009.

Premiums – Monies will be awarded

Breed Champions – Trophy

Reserve Champions – Rosette

Arrival Deadline: 5:00 p.m., Friday, August 28, 2009

Weigh In & Classification: 5:00 p.m., Friday August 28, 2009

Opening Ceremonies: 9:00 a.m. Saturday, August 29, 2009
with breeding cattle to follow

1. Cattle must be on cedar shavings. **No hay in barn.**
2. There will be separate competition for each breed. Classes will be set by the committee.
3. Entries must be postmarked by August 10, 2009. For information call **830-446-1950**.
Make all checks payable to **Kendall County Fair**. Entry fees must accompany entries and be mailed to:

**Denise Vadnais
P.O. Box 2154
Boerne, TX, 78006**



Division B

Breeding Sheep and Angora Goats

Entry Fee: \$5.00 a head. Entries postmarked by August 17, 2009.

Premiums – Monies to be awarded
Supreme Champion Ewe and Ram -- Trophy
Champion Ewe and Ram from each breed - Rosette

Arrival Deadline: 5:00 p.m., Friday, September 4, 2009

Weigh In & Inspection: 5:00 p.m., Friday, September 4, 2009

Opening Ceremonies: 800 a.m., Saturday, September 5, 2009
With Breeding Sheep & Angora Goats to Follow

“NEW” Goats must be sheared on or after August 1, 2009.

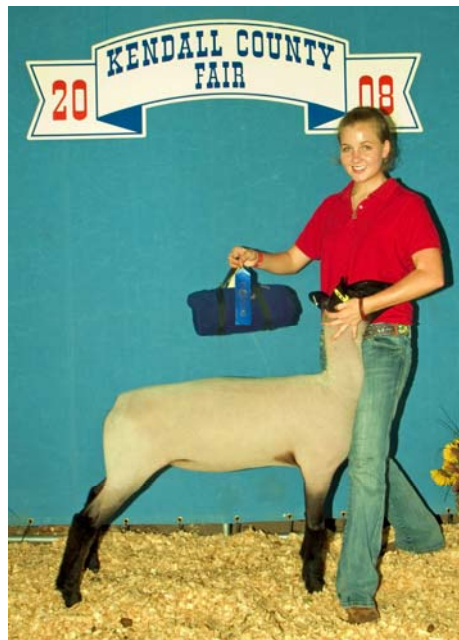
1. All Breeding Sheep must have a Scrapies Premise tag in their ear.
2. No hay in barn. Must furnish own wood shavings.
3. There will be separate competition for each breed.
4. Breeders may place 2 per class.

Classes

1. Lamb or Kid
2. Two-Tooth (Yearling)
3. Four-Tooth and older
4. Pairs – both sexes represented

Make all checks payable to **Kendall County Fair**. For more information call **830-446-1950**. Entry fees must accompany entries and be mailed to:

**Denise Vadnais
P.O. Box 2154
Boerne, TX, 78006**



Division C

Breeding Gilts

Entry Fee: \$8.00 a head. Entries postmarked by August 17, 2009.

Premiums – Monies to be awarded

Grand Champion Gilt over all breeds – Trophy

Sponsored by:

Breed Champions -- Rosette

Arrival Starting: 5:00 p.m., Saturday, September 5, 2009

Important: No arrival between 6-8 p.m. as not to interfere with Rodeo

Weigh In & Classification: 8:00 a.m., Sunday, September 6, 2009

Opening Ceremonies: 9:00 a.m., Sunday, September 6, 2009

With Breeding Gilts to follow.

1. All Gilts must be purebred.
2. Classes will be divided by weight: Light and Heavy.
3. There will be separate breed classes.

Make all checks payable to **Kendall County Fair**. For more information call **830-446-1950**. Entry fees must accompany entries and be mailed to:

Denise Vadnais
P.O. Box 2154
Boerne, TX, 78006



KCFA Labor Day Livestock 1st Annual Steer Show

**TCCA Sanctioned
Judges: TBA**

Entry Fees: “A” Show \$30.00 a head.
“B” Show \$10.00 a head.

Entries postmarked by August 10, 2009.
Premiums – Monies to be awarded

**“A” Show Grand Champion Steer
Buckle & \$300.00 Cash Award
Trophy sponsored by:
Gift Award sponsored by:**

**“A” Show Reserve Grand Champion Steer
Buckle & \$175.00 Cash Award
Trophy sponsored by:
Gift Award sponsored by:**

“B” Show only points will be awarded.

Breed Champions – Trophy
Reserve Breed Champions – Rosette

Arrival Deadline: 5:00 p.m., Friday, August 28, 2009
Weigh In & Classification: 5:00 p.m., Friday August 28, 2009
Showtime: Saturday, August 29, 2009 following Breeding Cattle

1. Exhibitors and Showman must be a Texas 4-H or FFA members, currently enrolled in Public or Private school below the college level.
2. Must participate in “A” Show to be eligible for “B” Show.
3. There will be weight divisions: Light and Heavy classes. A minimum of six head to make a **BREED** class. If there are not six head per breed they will be put in appropriate classes of ABC, AOB or British.
4. Steers must be sufficiently halter broke to be handled safely.
5. Blow & Show.
6. Steer must be on cedar shavings. **No hay in barn.**
7. Stalling space is limited. There will be **No Pre-assigned stalls**. Stalling will be on a first arrival basis. When the barn is full you will have to tie to your trailer. No refunds.
8. Generators encouraged.
9. Classes: Char., AOB, Chi, Limi, Maine, Simi, Brangus, Gerts, Simbrah, Brahmans, ABC, Short Horn, Polled Herefords, Herefords, Angus, Red Angus,

Entries must be postmarked by August 10, 2009. For more information call **830-446-1950**. Make all checks payable to **Kendall County Fair**. Entry fees must accompany entries and be mailed to:

**Denise Vadnais
P.O. Box 2154
Boerne, TX, 78006**

KENDALL COUNTY FAIR 30TH ANNUAL PIG SHOW

September 6, 2009 Boerne, Texas

TCPA Sanctioned
Judge: TBA

**“A” Show Grand Champion
Buckle & \$300 Cash Award
Sponsored by:
Trophy sponsored by:
Gift Award sponsored by:**

**“A” Show Reserve Grand Champion
Buckle & \$175 cash prize
Trophy sponsored by:
Gift Award sponsored by:**

**Breed Champion – Monies to be awarded
Reserve Breed Champion -- Monies to be awarded**

“B” Show only points will be awarded.

Class Premiums -- Monies to be awarded

Entry Fee: “A” Show \$25.00 a head.

“B” Show \$10.00 a head.

Entries postmarked by August 17, 2009

Arrival: Starting 5:00 p.m., Saturday, September 5, 2009
Important: No arrival between 6-8 p.m. as to not interfere with Rodeo
Weigh In & Classification: 9:00 a.m., Sunday, September 6, 2009
Opening Ceremonies: 9:00 a.m., Sunday, September 6, 2009

RULES OF THE SHOW

1. Must be a Texas 4-H or FFA members, currently enrolled in Public or Private school below the college level.
2. No limit on the number of entries.
3. Weight limit 130# minimum.
4. Barrows and Gilts show together.
5. Classes will be broken by weight. Must be eight head or more to split light and heavy.
6. No Boar Pigs.
7. There will be a 10# weigh back.
8. Must furnish own wood shavings.
9. Major show grooming rules apply.
10. Classes: **Duroc, Hamp, Yorks, OPB light, OPB Dark, Crosses**
11. Purebred Gilts may show in the breeding class if additional \$8.00 entry fee is paid by August 17, 2009. See Division C Breeding Gilts.
12. All pigs must meet current **Texas Animal Health Commission Regulations.**

Make all checks payable to **Kendall County Fair**. For more information call **830-446-1950**. Entry fees must accompany entries and be mailed to:

**Denise Vadnais
P.O. Box 2154
Boerne, TX, 78006**

KENDALL COUNTY FAIR 29TH ANNUAL LAMB SHOW

September 5, 2009 Boerne, Texas

TCLA Sanctioned

Judges: TBA

“A” Show Grand Champion

Buckle & \$300 cash award

Trophy sponsored by:

Gift Award sponsored by:

“A” Show Reserve Grand Champion

Buckle & \$175 cash prize

Trophy sponsored by:

Gift Award sponsored by:

Breed Champion -- Monies to be awarded
Reserve Breed Champion -- Monies to be awarded

“B” Show only points will be awarded.

Class Premiums -- Monies to be awarded

Entry Fee: “A” Show \$25.00 a head.

“B” Show \$10.00 a head

Entries postmarked by August 17, 2009

Arrival Deadline: 5:00 p.m., Friday, September 4, 2009

Weigh In & Inspection: 5:00 p.m., Friday, September 4, 2009

Opening Ceremonies: 800 a.m., Saturday, September 5, 2009

Showtime: 10:00 a.m. following showmanship

RULES OF THE SHOW

1. Must be a Texas 4-H or FFA members, currently enrolled in Public or Private school below the college level.
2. Animals in the Showmanship Division must also be entered in Lamb Show.
3. No weight limit. No limit on number of entries.
4. Must furnish own wood shavings.
5. Classes will be split by weight by the committee.
6. Lambs must carry all baby teeth.
7. There will be a 4# weigh back.
8. Lambs will be classified.
9. All Ewe Lambs must have Scrapies Premise Tag in their ear.
10. All lambs must meet current **Texas Animal Health Commission Regulations**.
11. Classes: **Southdown, Finewool, Finewool Cross, Medium Wool**.

Make all checks payable to **Kendall County Fair**. For more information call **830-446-1950**. Entry fees must accompany entries and be mailed to:

Denise Vadnais
P.O. Box 2154
Boerne, TX, 78006

KENDALL COUNTY FAIR 12TH ANNUAL MEAT GOAT SHOW

September 5, 2009 Boerne, Texas

TCMGA Sanctioned

Judges:

Grand Champion
Buckle & \$300 cash award
Trophy sponsored by:
Gift Award sponsored by:

Reserve Grand Champion
Buckle & \$175 cash award
Sponsored by:
Trophy sponsored by:
Gift Award sponsored by:

Class Premiums – Monies to be awarded

Entry Fee: "A" Show \$25.00 a head.

"B" Show \$10.00 a head

Entries postmarked by August 17, 2009

Arrival Deadline: 5:00 p.m., Friday, September 4, 2009

Weigh In & Inspection: 5:00 p.m., Friday, September 4, 2009

Opening Ceremonies: 8:00 a.m., Saturday, September 5, 2009

Showtime: 10:00 a.m. following showmanship

RULES OF THE SHOW

1. Must be a Texas 4-H or FFA members, currently enrolled in Public or Private school below the college level.
2. Animals in the Showmanship Division must also be entered in Goat Show.
3. Must furnish own wood shavings.
4. No hay in barn.
5. No weight limit. No limit on number of entries.
6. There will be a 4# weigh back.
7. Goats must be uniformly shorn 3/8" or less above the knee and hocks.
8. Goats must have horns tipped.
9. Does or Wethers may be shown.
10. No bucks allowed at show.
11. All Goats must meet current **Texas Animal Health Commission Regulations.**

Make all checks payable to **Kendall County Fair**. For more information call **830-446-1950**. Entry fees must accompany entries and be mailed to:

Denise Vadnais
P.O. Box 2154
Boerne, TX, 78006

Special Awards & donations by the following:

Director's Choice Award
Trophy & Prize for
2 youth in each division (Cattle, Lamb, Goat, Pig)

Sponsored by:

Showmanship Lamb, Pewee Division:

Showmanship Lamb, Junior Division:

Showmanship Lamb, Intermediate Division:

Showmanship Lamb, Senior Division:

Showmanship Goat, Pewee Division:

Showmanship Goat, Junior Division:

Showmanship Goat, Intermediate Division:

Showmanship Goat, Senior Division:

Hotel Rooms for Judges Sponsored by:

*Thank You to our
Livestock Show Sponsors!*

Local Hotel Information

Holiday Inn 830-249-6800
35000 IH 10 West
Boerne, Texas 78006

Tapatio Springs Resort & CC 830-537-4611
End of John's Road
Boerne, Texas 78006

Best Western Inn & Suites 800-299-9791
35150 IH 10 West
Boerne, Texas 78006

Laquinta Inn & Suites 830-249-1212
36756 IH 10 West
Boerne, Texas 78006

Hampton Inn & Suites 830-249-8047
34935 IH 10 West
Boerne, Texas 78006

